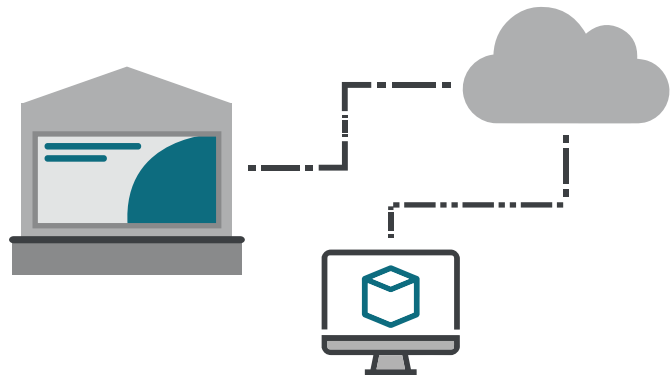


SIGN COMMUNICATIONS

SECURITY & CONVENIENCE

WIRELESS COMMUNICATION

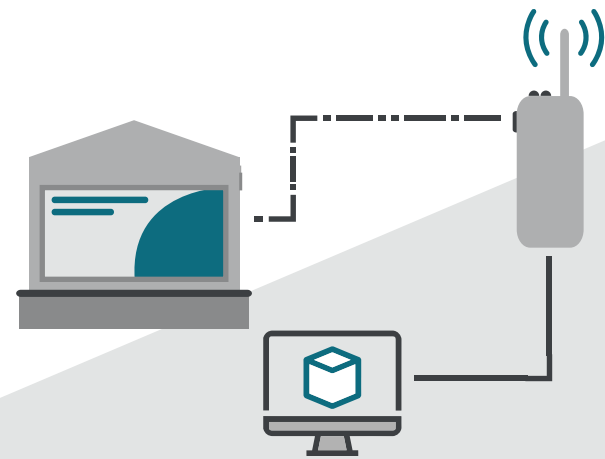
The Watchfire Wireless Plan is an inexpensive, convenient communication option compatible with either our PC-based or cloud-based software options.



Watchfire's plan provides dependable service across Verizon's network coverage area. With no radios to install or cables to run, the Wireless Plan is a turnkey solution that offers the most benefits to your customer. This method is also Mac compatible.

RWF & HIGH SECURITY RADIO

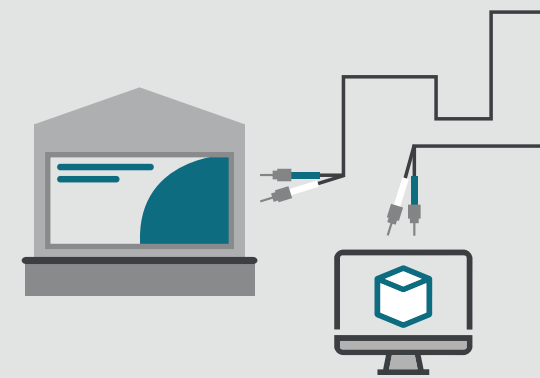
Point to point radio provides fast, secure communication. RWF is especially effective when no internet is available.



High Security Radio is preferred for many financial institutions, medical facilities, military installations and industries that require an additional level of data security. It features frequency agility, enabling the radio to detect interference and optimize secure communications.

FIBER-OPTIC CONNECTION

Fiber-optic cable is the required communication method for displaying a live video feed on an outdoor display.



Each fiber configuration uses an indoor controller and requires that the cable be run through a 1.5" conduit to the sign. Closed-loop systems can be customized to meet security needs and PC-based software is required.

CUSTOM CONFIGURATION

Watchfire can help you develop a fully integrated solution for managing digital signage networks, live video feeds and different multimedia feeds. For customers using displays for live event production, a video switching system must be used to select and play content from multiple sources. This allows for smooth transitions between sources, creating seamless live event production.



QUICK FACTS



CONTROLLING SIGN NETWORKS

Wireless communication or fiber-optic cable can be used, depending on the nature of the network. Watchfire's Ignite OPx cloud based software paired with wireless communication provides a seamless solution for indoor and outdoor networks.



LIVE VIDEO

For sports or live events, Watchfire software and hardware can be configured to play a single source or integrate with a video switching system.



SECURITY

Our products offer multiple layers of security. In addition to password protection, Ignite's proprietary session system prevents outside software from gaining access to the sign's controller. Ignite follows newer TLS protocols for network security and data integrity.